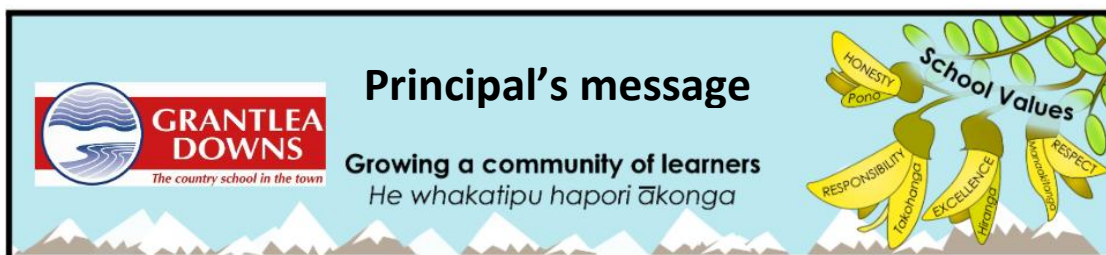




**14 May 2025**  
**Newsletter No 7**



Tena koutou Katou

Welcome to another edition of our school newsletter. As we embark on this significant year in education, I am happy to share some updates and initiatives we are continuing to establish at Grantlea Downs.

### New Mathematics and Statistics Curriculum

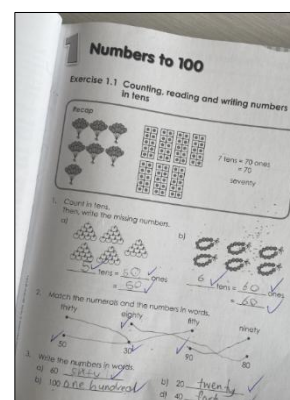
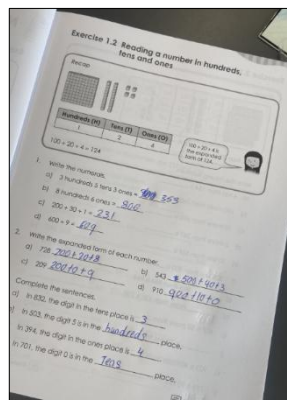
This year marks the introduction of the refreshed curriculum for English and Mathematics. In this newsletter, I will focus on the Mathematics and Statistics curriculum and how we are establishing effective practices here at Grantlea Downs. Our new approach involves teaching the set learning outcomes for each year level, ensuring that every student receives the support they need to achieve these goals. For students who may need additional assistance, our dedicated teachers are committed to meeting them where they are and providing the necessary support to help them succeed. Conversely, if a student has already mastered the learning outcomes, they will be challenged to apply these mathematical concepts in diverse contexts.



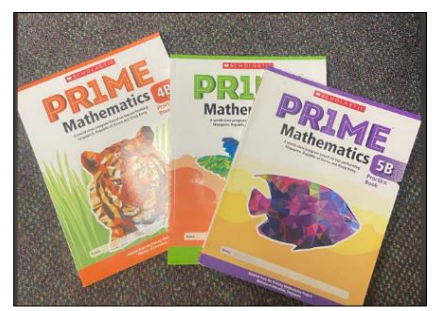
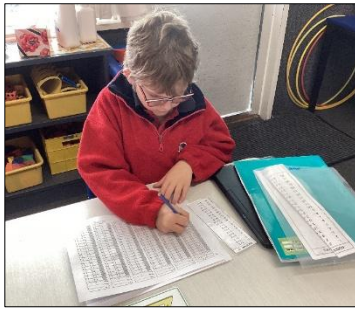
Our teachers utilise the national curriculum to strategically plan and prepare rich mathematics lessons, supplemented by Pr1me maths textbooks. Additionally, we strive to integrate mathematics with our term topics—this term, we are exploring New Zealand History with a focus on trading. We aim to incorporate mathematics into our trading lessons, fostering a comprehensive understanding of both subjects.

We use a range of teaching strategies to teach

mathematical concepts. Sometimes we teach the whole class, take small groups or work one-on-one with students to help them learn the content. We use games, rich problem-solving tasks, and activities to help reinforce learning outcomes.



The Pr1me textbooks help supplement our Mathematics programme and are a great tool to help practice Maths concepts being taught.



Home > Parents and caregivers > Schools (Year 0-13)

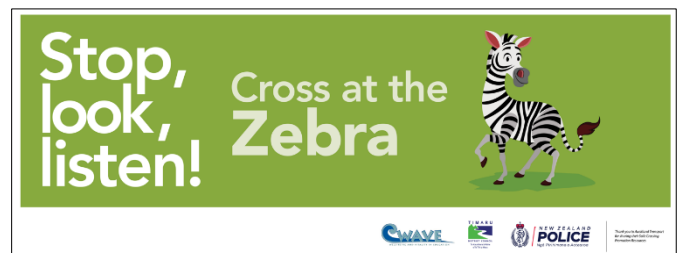
## Understand your child's learning Parent Portal

Welcome to the Parent Portal, designed to help you understand what your child is learning at school or kura, how they are progressing against the curriculum, and what you can do to support them at home.

I'm pleased to announce that the government has recently launched a parent portal, providing a valuable resource for parents to explore. In the link below, you will find more information about this portal, which offers comprehensive insights into the New Zealand curriculum. I encourage you to visit the website to familiarise yourself with this helpful tool. And of course please feel free to contact your child's teacher to arrange a meeting time if you would like more information about our learning programmes at Grantlea Downs.

[Information about the Parent Portal](#)

[Link to Parent Portal](#)



It's Road Safety Week! I urge all students and parents to use the designated crossing before and after school. Students must cross at the crossing instead of walking to the roundabout, as it is much safer. We've had a couple of close calls with students attempting to cross at the roundabout, so please prioritise safety by using the crossing and discussing this with your child.

### Emergency Evacuation Procedures

As part of our commitment to safety, we conduct an evacuation drill every term. In Term 1, we practised our fire drill procedure, and due to a technical issue, we had the opportunity to practice it twice last Thursday! Later this term, we will conduct a reverse drill, which is used when we need to remain indoors for safety. The link below is a copy of our evacuation procedures for your information. Please ensure your contact details are up-to-date so we can reach you in an emergency.

<https://drive.google.com/file/d/1-fVIWLwJlko3ECiuCCo88KTFBLJnHn6S/view?usp=sharing>



### Mitre 10 Go Kart Race Success

Congratulations to Aria and Jayda for their outstanding performance in the annual Mitre 10 go-kart race last Thursday. Their skilful navigation through the insulation bales in a figure of 8 earned them a well-deserved 3rd place overall and a \$200 prize for the school. We are immensely proud of their dedication and sportsmanship.



### Community Feedback and Strategic Planning

Thank you to everyone in the Grantlea Downs community for taking the time to provide your invaluable feedback through our recent survey. Your insights are crucial as we strive to make meaningful improvements at our school. Some changes will be implemented swiftly, while others will require careful and strategic planning to ensure they are sustainable and impactful. This feedback will also play a pivotal role in shaping our new strategic plan for 2026 through to 2028. A school's strategic plan is the backbone of our operations, guiding us in achieving our core objectives and ensuring we focus on what truly matters at Grantlea Downs. Your input is vital, ensuring that our goals align with your aspirations for your child's education. Please continue to share your thoughts and have your say as we work together to enhance the educational experience at Grantlea Downs.

If you would like to share your ideas or give feedback please use this link to complete this short survey.

### [Community Survey](#)

Thank you for your continued support and involvement in our school community. Together, we are making strides in providing a dynamic and enriching educational experience for all our students.

Ngā mihi nui  
Beth Wills

### NEW STUDENTS

We welcome the following students to Grantlea Downs in the last fortnight: Ardvik



Rinsh, Emilia Backhouse, Lewis Seeler, Emily Smith, Sisila Fakasiieiki, Telenoti Fakasiieiki and Leonaitasi Fakasiieiki

### Pink Shirt Day 2025

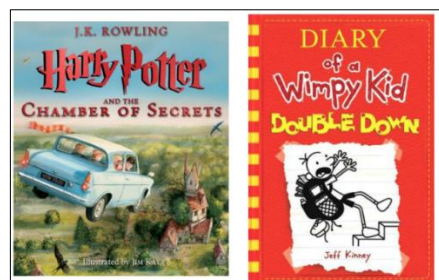
Grantlea Downs is joining the movement on Pink Shirt Day on Friday, 16th May.

Run by the Mental Health Foundation, Pink Shirt Day is the day Aotearoa New Zealand comes together to take a stand against bullying. Pink Shirt Day works to reduce bullying by celebrating diversity in all its forms and supporting schools, workplaces and communities to be safe, supportive, welcoming and inclusive for everyone. By choosing compassion and standing up for each other, we can reduce bullying in Aotearoa and foster spaces where everyone feels they belong.

To celebrate this important kaupapa we'll be having a **dress in pink day** on Friday, 16th May.



### Grantlea Downs Book Night 4th June 2025



- Grantlea Downs Book Night is being held on Wednesday 4th June, 2025
- 6.00- 7.15pm in the Hall at Grantlea Downs School.
- Parents, children, grandparents, aunties and uncles are all welcome. All children please accompanied by an adult.
- Heaters will be on and supper and milo is provided.
- Wear your pyjamas, bring your teddy and some rugs/blankets.
- Bring your favourite book to read, e-book, comics, graphic or audio book.
- Numbered tickets will be given out at the door and at the end of the evening we will have a lucky number draw with a selection of prizes

## About the Home & School

We work with the school to maintain and build close links with the community. Our aim is to organise social events to bring the school community together, and plan and implement fundraising projects to support the school and its students, making Grantlea Downs the best it can be!

We have helped the school to provide a lot of additional resources and equipment, including contributing to...

- ❖ School Playground and Junior Playground
- ❖ Sandpit Area
- ❖ Pool Cover and fibre glassing of pool
- ❖ Chromebooks and iPads in classrooms
- ❖ Glass House
- ❖ Long jump pits
- ❖ STEM equipment
- ❖ PMP equipment (Perceptual Motor Programme)
- ❖ Bike track
- ❖ Library shelving
- ❖ Sensory Pathway
- ❖ and more

*Please join the principals for morning tea and a chat on **Thursday 15<sup>th</sup> May 2025** at 9.45am to 10.30am in the staffroom.*

### SCHOOL BOARD MEETING

The School Board meeting is next Tuesday, 20 May 2025 at 6.30 pm in the Administration Office Board Room. All parents are welcome to attend. Please note that while members of the public can attend this meeting, it is not a public meeting.

### Principal Awards – Term 2 Week 2

Aleko Lord, Vanessa Yorston, Lavanya Renjith, Quinn Hansen

### Class and Values Champions

#### Class Awards – Week 1

Georgie Morris, Chloe Ferguson, Xavier Peters, Pascoe Smillie, Lilly McGrail, Sophie Scott, Lucy Clark, Mikayla Rose, Tori Flintoft, Keeva Fitzgerald, Mason Fitzgerald

#### Values Champion – Week 2

Ardvik Rinsh, Harlee-Rose Dragsund, Sonny Dockrill, Anna McAuliffe, Chase Reweti, Anastacia Hayes, Carter Halkett, Charlee Rawson, Payton Tairaki, Heidi Fuller, Jaydie Taylor-Dinsdale

### SCHOOL CLOSED – ADVANCED NOTICE

We have a Teacher Only Day scheduled for Week 5, **MONDAY 26 MAY 2025**. The following Monday, **2 JUNE 2025** is Kings Birthday Public Holiday.

### NETBALL SKILLS

We have had the opportunity this week to have Maia from Netball South Canterbury holding coaching sessions with all of our children. They have been learning the basic skills of warm up, balance and passing the ball.





# COMPETITIVE CROSS COUNTRY



**When: Tuesday 27th May, 11am start**

The Grantlea Downs Cross Country will be held this year on Tuesday 27th May. Any students from Year 3 to Year 8 who would like to enter in the competitive cross country will need to register when the notice board comes around classes. Encourage your children to enter the competitive cross-country and earn keko cards for their efforts. All children entered in the competitive cross country will go in the draw to win some Rebel Sport Vouchers.

The Cross Country will be run the same as last year. The junior events will take place first and then the senior events. After the completion of the first round the junior children will return back to their classes and then the seniors will begin.

**11am start:** *Race Events: Girls and Boys will race together.*

- Year 3
- Year 4
- Year 5
- Year 6
- Year 7
- Year 8

## **This is the confirmed order of all races**

*Please ensure your child brings the following:*

- Suitable running shoes
- School shorts and t-shirt to run in (children can run in their house colour t-shirts and will need their school sweatshirt/polar fleece for after the race)
- Water bottle

**Students are training daily at school for their race, and we encourage parents to support their children in practising at home for the event as well.**

**We welcome and encourage parents, caregivers and family members to attend and support the students.**

The South Canterbury event will be held on Tuesday 10th June and the top two boys and girls for each year level from Years 5-8 will represent the school at this.

## **Non - Competitive House fun run**

The non- competitive "House Fun Run" is back! This is where the students will complete as many laps of an obstacle course as possible. Each lap, the students will drop a popsicle stick into their house bin and collect points for their house! All students are expected to participate in this event and wear house colours to show their support! There will be spot prizes for the best dressed and students displaying the school values!

1.15-1.45pm (approx) - Opihi and Waipopo Teams

2-2.30pm (approx) - Acacia and Kereta Teams

# Concerns and Complaints Process

This information should be read alongside our **Concerns and Complaints Policy** and related policies on SchoolDocs.

## OVERVIEW



You can raise concerns and complaints with our school verbally or in writing.



The school will assess and respond according to the nature of the concern or complaint.



The school will tell you how we plan to manage your concern or complaint, and let you know when the matter is closed.



## HOW TO RAISE A CONCERN OR MAKE A COMPLAINT

Contact the following people at the school (verbally or in writing).

**A staff member involved**  
(e.g. classroom teacher, head of learning area)

**The principal**  
for serious matters

**The board chair**  
for concerns or complaints about the principal

**Another board member**  
for concerns or complaints about the board chair

- Concerns or complaints may be referred to a more appropriate person (e.g. senior staff, principal, board member).
- The school may ask you to put your concern or complaint in writing to help address the matter.
- You are welcome to have a support person (e.g. whānau member, friend, lawyer, union representative).
- Everyone involved is expected to respect privacy and confidentiality.



## HOW THE SCHOOL MANAGES CONCERNS AND COMPLAINTS

We manage concerns and complaints in a timely manner and seek to protect people's mana and dignity. We ensure:

- people are treated fairly
- those involved have the opportunity to be heard
- decision-making is unbiased.

**The school assesses the concern or complaint and responds according to its nature and seriousness, and who is involved** (e.g. student, staff member, principal, board member).



## NOTIFICATION AND CLOSURE

We will tell you about how we plan to manage your concern or complaint, and let you know when the matter is closed.

After responding to your concern or complaint, **the school considers the matter closed.**

**If you feel your concern or complaint has not been resolved after receiving a response,** you may escalate the concern or complaint to the principal or board.

**After the board has dealt with a matter,** there is no further avenue for consideration by the school.

If you need help to understand the concerns and complaints process, please contact the school.

# COMMUNITY NOTICES



## Consider Others – Park Responsibly

**Do Not Park or Stop Your Vehicle:**

- On the right-hand side (except in one-way streets).
- Where it obstructs road users, including pedestrians.
- Near corners, curves, or intersections that block visibility.
- On the road if off-road parking is available (without damaging grass/gardens).
- On footpaths, traffic islands, taxi stands, or bus stops.
  - Closer than 6 metres to:
    - An intersection.
    - The approach side of a pedestrian crossing.
    - A bus stop.
- In front of or within 1 metre of a driveway.
- Double-parking (alongside another vehicle).
- On no-stopping lines (broken yellow lines).
- In cycle lanes, bus/transit lanes during operational hours.
- On or near fire hydrants (within 50 cm or between hydrant markers)

**Illegal Parking** (Diagram showing car parked on footpath)

**Legal Parking** (Diagram showing car parked on road)

**Keep driveway clear**  
**NO PARKING**

YOU CAN BE FINED OR HAVE YOUR VEHICLE TOWED IF YOU PARK IN PROHIBITED AREAS.



## CHILDREN'S Event

Mid - South Island Women's Refuge & Family Safety Services

**FREE EVENT FOR THE WHOLE WHANAU!**

**SUNDAY 13<sup>TH</sup> JULY 2025**  
**TIMARU CAROLINE BAY HALL**  
**1PM - 3PM**


**ENTERTAINMENT - ANIMALS - BBQ - ICECREAMS**  
**CRAFTING - EMERGENCY SERVICES - GAMES - DISCO**  
**FACEPAINTING - PRIZES - COMPETITIONS AND HEAPS MORE!!!**

**DRESS UP COMPI!!**  
Dress up as your fav superhero!

# The Last 10,000 Years

**Tales from South Canterbury's lost world**  
An event to mark **International Biodiversity Day**  
Illustrated talk & Museum tour by Museum Director Philip Howe  
Get a closer look at specimens and replica items

**7pm Thursday 22 May**



**SOUTH CANTERBURY MUSEUM**  
EXPLORE our heritage

**Admission**  
\$10 adult, \$5 student  
Proceeds going to SC Museum Development Trust

**Booking essential, places limited**  
(03) 687 7212 or  
museum@timdc.govt.nz  
Perth Street  
Downtown Timaru

## Wheelie Good Tip

### RECYCLE BIN

Some streams of recycling are sorted by hand! Keep our team safe by leaving sharp or dirty recycling out of your yellow recycling bin



TogetherReducingWaste@enviroz.co.nz



## COMMUNITY NOTICES

AROWHENUA WHĀNAU SERVICES

# STRONGER TOGETHER

WORLD SMOKEFREE MAY 2025

GAMES  
GIVEAWAYS  
SAUSAGE SIZZLE  
...AND MORE!!!

Nau mai hāere mai!  
This is a free, whānau friendly event to celebrate health and to encourage a collaborative Smokefree Aotearoa

SATURDAY 24TH MAY  
11:00AM-2:00PM  
CAROLINE BAY HALL, TIMARU

**THAT'S US** SMOKEFREE 2025 HĀPAI TE HAUORA



# SAVING THE WORLD

with Professor Ann Brower

## ONE DATAPOINT AT A TIME





Photo credit: Upper Rāmpitahi Department of Conservation

University of Canterbury's **Professor Ann Brower**, the 2022 Charles Fleming Award winner will discuss her work that have helped protect 5% of Aotearoa New Zealand's landmass. Using her research of the Mackenzie basin and Canterbury's braided rivers, she will illustrate how science and data can be used to improve the conservation of New Zealand's unique landscapes and biodiversity.

**WEDNESDAY 14TH MAY**  
**7PM | PRE REGISTER**  
SOUTH CANTERBURY ECO CENTRE  
55C REDRUTH STREET, TIMARU  
Registration : [www.scecoecentre.org.nz/events/](http://www.scecoecentre.org.nz/events/)

**FREE**

 SOUTH CANTERBURY ECO CENTRE  
Te Pokapū Taiao o Aoraki

 CANTERBURY BRANCH

 ROYAL SOCIETY TE APĀRANGI

2.5% of total sales will go to Variety - The Childrens Charity

 **noel leeming**

# friends & family deals are here!

From 5 May - 18 May 2025

Use this code online **FFMAY25\_VARIETY**

Scan for more details



Scan this barcode instore



174432

 **fern**

**FUEL FOR SCHOOLS**

Have your bulk fuel purchases support our school!

For every 1,000L of bulk fuel you get we receive \$5



Call Fern on 0800 99 99 89 to start supporting us today!